

TOOLS

F19F3001

Technical Design



Description

Adjustable semirecessed light with structure in wear-resistant plastic Grivory® material designed to withstand high temperatures. Design conceived to reduce the time required for installation, assembly and maintenance.

Voltage

220-240V

Socket

1xGU10

Light source and alternative bulbs

cod. A11105C01

GU10 1x7W - LED
Max Watt. 50W

Not included accessories

Bulb

Weight Lamp

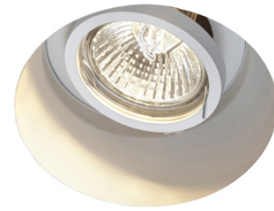
Net: 0.14 kg

Packaging

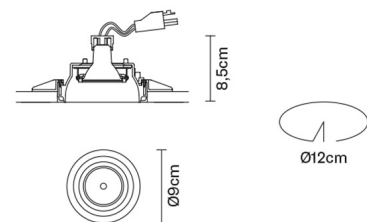
Gross weight: 0.8 kg
Volume: 0.023 m³
Number of boxes: 2

Specs

IP20



Dimensions



Material

Grivory®

Available structure colours

White

In the same family



Square
dowlight

Sphere
dowlight